

WATFORD FOOTBALL CLUB

SEASON 1968-69



Saturday, 7th September, 1968

FOOTBALL LEAGUE DIVISION THREE

SWINDON TOWN

Kick-off 3 p.m.

OFFICIAL PROGRAMME

ONE SHILLING

BE LIKE WATFORD F.C. . . .

Get your Sports Equipment from the Specialists . . .

PETER SPIVEY LTD.

83A The Parade, Watford. Tel. 26550

and at

71 Marlowes, Hemel Hempstead. Tel. 56760

E. E. BEAUMONT & SON

(Established 1763)

Motor Body Repair Specialists

27 HIGH STREET, PINNER, MIDDLESEX

Telephone: 01-866 0730

REPAIRS LUBRICATION PETROL ACCESSORIES

*For quick, economical repairs and personal service
call and see Eric at*

VICARAGE ROAD SERVICE STATION

Adjacent to the Ground

WATFORD 31968

BRIDGEWATER FOR GLASS

ALL TYPES OF GLASS CUT WHILE YOU WAIT

Safety Glass : Table Tops : Curved Screens

Leaded Lights : Mirrors : Mirrors Re-Silvered

46 VICARAGE ROAD, WATFORD Tel. 36162, 20339 and 43096

Tel. WATFORD 25107

CROXLEY BUILDING SUPPLIES LTD.

Builders Merchants

Bricks, Cement, Lime, Plasters, Dampcourse,
Tiles, etc.—Concrete Spurs, Coal Bunkers,
Paving Slabs—Roofing Felt, Snowcem, etc.

SUPPLIED IN ANY QUANTITY

Showrooms adjoining Met. Station
(Kitchen Units, Sanitary Ware, Paints, etc.)

RICKMANSWORTH 75887

MET & L.N.E. STATION, CROXLEY GREEN, HERTS

THE THIRD DIVISION SCENE

WATFORD BEST IN SECOND HALF

By Tony Pullein

IF the pattern of early season games obtains today, then we shall probably witness a dour, defensive, opening 45 minutes with fireworks flying after the interval. The accompanying tables show both Swindon and Watford to be vastly different teams after the rest. Only Plymouth (who rise 17 places in the second chart) show a more dramatic improvement than Watford (up 15 positions) in the second half.

Luton have already proved themselves one of the best teams in the division and their performance appears to remain constant throughout the whole 90 minutes. They top both tables. Worst second-half declines are by Bristol Rovers, Crewe, Rotherham and Walsall.

Best first-half performance was Brighton's 4-0 lead over Oldham, later extended to a final 6-0 victory. Reading, who "won" the second half of their match with Hartlepool 4-0 (final score 7-0), and Crewe, who created a similar second-half margin of superiority over Bristol Rovers (final score 6-1), are credited with the best feats after half-time.

A total of 82 goals has been scored in the opening periods, the rate dropping to 75 after the break. Watford and Hartlepool are the only teams without a goal in the opening period while Swindon have yet to concede a goal in either half.

The accompanying tables are compiled by splitting all Third Division matches into two units, awarding two points for a win, one for a draw in the first half and likewise for the second period. The plus or minus figures in the second chart give quick guidance to the difference in each club's position in the first list.

As the season progresses it will become even more apparent which sides fold up at half-time and, perhaps more important, which ones—like Watford—reserve their best for after the break.

	P	For	Ag	Pts
Luton	5	10	2	9
Brighton	5	8	3	7
Crewe	5	5	4	7
Bournemouth	5	5	2	6
Reading	5	5	2	6
Walsall	5	2	1	6
Mansfield	5	5	3	6
Rotherham	5	7	5	6
Bristol Rovers	5	5	4	6
SWINDON	4	1	0	5
Barrow	5	4	4	5
Stockport	5	3	3	5
Tranmere	4	3	4	5
Orient	4	2	2	4
Torquay	5	5	6	4
Southport	5	3	5	4
Northampton	3	1	1	3
Barnsley	5	2	6	3
Oldham	5	3	9	3
Shrewsbury	5	1	4	3
WATFORD	4	0	1	3
Plymouth	4	1	3	2
Gillingham	5	1	4	2
Hartlepool	4	0	4	2

	Comp. with First-half table	P	For	Ag	Pts
Luton	—	5	5	1	8
Torquay	+13	5	4	1	8
SWINDON	+7	4	3	0	6
Reading	+1	5	6	3	6
Plymouth	+17	4	5	3	6
WATFORD	+15	4	3	1	5
Tranmere	+6	4	2	1	5
Mansfield	—1	5	3	2	5
Brighton	—7	5	4	3	5
Bournemouth	—6	5	4	3	5
Orient	+3	4	6	5	5
Barrow	—1	5	2	2	5
Stockport	—1	5	3	3	5
Shrewsbury	+6	5	2	3	5
Crewe	—12	5	5	4	4
Gillingham	+7	5	3	4	4
Walsall	—11	5	3	4	4
Oldham	+1	5	1	4	4
Northampton	—2	3	1	1	3
Rotherham	—12	5	2	2	3
Barnsley	—3	5	2	4	3
Hartlepool	+2	4	1	5	3
Bristol Rovers	—14	5	3	9	2
Southport	—8	5	2	7	1

WATFORD ASSOCIATION FOOTBALL CLUB LIMITED

Founded 1891

Registered Offices: VICARAGE ROAD GROUND, WATFORD. Telephone: Watford 21759

Directors:

J. BONSER (Chairman) D. N. BROAD (Vice-Chairman)
S. A. LEPARD J. HARROWELL A. A. WHITE

Medical Advisers: Drs. EDWARDS and BLACK

Hon. Treasurer: C. G. LAYLEY

President: THE WORSHIPFUL THE MAYOR
(Alderman Alec Merrifield, J.P.)

Vice-Presidents:

E. C. AMEY, D. ATKINS, T. D. BATCHELOR, E. E. BEAUMONT, F. T. H. BOSHER, C. R. BRINDEN,
G. CARSONS, D. G. CLAY, T. CUFF, J. W. DAWKINS, E. EDMONDS, F. GEARY, F. G. GIBBS,
L. GOODALL, Mrs. A. B. HEADY, E. ERIC HUGHES, H. HUTCHINSON, A. S. JOLIFFE, F. JONES,
R. S. F. KIRK, D. F. LINDSEY, J. G. MASTERTON, J. T. MASTERTON, J. D. MORGAN, H. MUIR
STRATFORD, P. G. WELLFAIR, C. W. WHITE, F. WITHEY.

Manager: K. FURPHY

Secretary: R. E. ROLLITT

Trainers: G. AITKEN

Physiotherapists: P. MOLLOY

SERIAL NO. 4

Our New Goalkeeper

GOOD afternoon, ladies and gentlemen.

Today we entertain Swindon Town in a League encounter, and welcome directors, players and supporters to Vicarage Road. Our previous recent encounters have always been keen with the "Railwaymen," and we are sure today's will be no exception.

Our visitors, the best-supported club in the division last season, are very ambitious and during the close season spent a considerable amount of money on new players. Frank Burrows, from Scunthorpe United, at centre half, cost a five-figure fee, and Chris Jones, the Manchester City reserve centre forward, also cost a similar fee. Don Rogers, the outstanding winger in the division, still plays at outside left. They are managed by Danny Williams, the old Rotherham United manager.

Now to last Saturday. How can a side have complete control as we did and yet lose? Several golden opportunities were missed, but the chances were created. We can well understand our supporters' frustration, but the slow handclap does not help the team. They need encouragement when things are not going right. We all know we can't afford to lose home points, particularly when in football skills we were the superior side. You can rest assured that the Manager and players are fully aware of their deficiencies and are doing everything possible to rectify the position.

Last Tuesday, Mike Weller, the York City and Welsh Under-23 goalkeeper, signed for the club. Manager Ken Furphy was impressed with the two displays he saw from Mike some two weeks ago. He moves to Watford next Monday and will reside in Courtlands Drive Avenue. May we wish him a very happy and successful stay with the club.

Supporters will have noticed that our floodlight pylons have been repainted recently. Though the cost was in the region of £750, the Board considered that this was an essential maintenance job.

We have received the seasonal letter from a supporter asking where a few of the old favourite players are these days. Jimmy Bowie is at present Manager of Trowbridge Town (Southern League), Cliff Holton is on the Orient staff coaching the Juniors, Dave Underwood is managing Wealdstone F.C., Micky Benning is now playing for Dunstable in the Southern League, Vince McNeice is playing for Hillingdon (Southern League), Bobby Bell is still appearing for Folkestone Town, George Catleugh has now retired but we understand he is still very much a supporter of the club.

The Juniors were on the winning trail last Saturday, defeating Oxford United by three goals to nil. Scorers: White, Pearce and Mitchell.

Zambian Reflections

Most people, I suppose, will associate Zambia (Northern Rhodesia) with their political struggle and disagreements with Rhodesia, but, after spending several weeks in Central Africa during our close season, I can tell you with authority that the majority of Zambians are as enthusiastic and interested in the game of football as we are in this country.

Football over there is played on a part-time professional or amateur basis, and they have a National First Division of 14 teams, a National Second Division and a reserve team league as well as numerous local district amateur leagues.

I was invited there, with 14 other player/coaches from other parts of England, to spend two months training and coaching their teams in an attempt to improve their standard of play in preparation for Zambia's challenge to attain the Africa Cup and so be eligible to enter the preliminary rounds of the World Cup.

Each one of us was attached to one of their First Division clubs, with the extra player/coach being attached to the Zambian National Team, but, as well as this duty, we performed other coaching work with local youth clubs, schools and amateur teams in our districts.

An ex-Hull City colleague and myself were allocated to two clubs in the town of Kabire (Broken Hill), which is situated in the middle of Zambia, with Lusaka, the

(continued on page 13)

EVENING
echo

**YOUR
OWN
PAPER
NIGHTLY**

FOOTBALL NEWS & VIEWS

EVERY NIGHT



sportsecho

EVERY

CLASSIFIED RESULTS EDITION

SATURDAY

Young Supporters of Watford

Trevor Binney (4)

Trevor Binney has now been watching the "Hornets" for about four years, since he was 10 years old, and has only on the odd occasion missed either a home first team match or a Reserve game. He is one of the young supporters who are not content with just watching because he, in his own small way, helps in the running of the club. At all League matches he will be found selling Jackpot tickets, and anyone who goes to the Reserve games will almost certainly have bought their programme from him at one time or another.

Trevor is a keen collector of football programmes and has a collection of several hundred at home. Recently, he started collecting metal football supporters club badges and already he has badges from places as far away as Dunfermline and Sheffield United.

His favourite player is Stewart Scullion, and the one thing that sticks in his mind from last season as the outstanding event was Scullion's first goal against Stockport County, and I'm sure all who saw it will agree. The Lowestoft FA Cup programme says he beat nine Stockport players to score the goal, and whilst this is an exaggeration, the way he left defenders floundering in his wake will be remembered for a long time.

The team he most likes to watch playing Watford is today's opponents, Swindon Town, because they usually play entertaining football and like the "Hornets," have, in his opinion, an outstanding winger.

So many good things at



CLOSED MONDAYS

**OPEN ALL DAY
EVERY WEDNESDAY**

Open until 8 p.m. every Friday

CLEMENTS ● THE PARADE, WATFORD ● TEL. 44222

TODAY'S OFFICIALS

The appointed referee for this afternoon's match is Denis Corbett from Wolverhampton. Mr. Corbett is 6ft. 2in., weighs approximately 13st. and was a former Sergeant in the Grenadier Guards and saw active service in North-West Europe and Palestine. By profession he is a material controller for a large engineering firm in the Midlands. He has had six years' experience as a Football League referee and, prior to that, four years on the League List of Linesmen. He refereed the Irish Cup Final in Dublin between Shamrock Rovers and Cork Celtic in 1964, and was a reserve linesman for World Cup matches at Villa Park.

Mr. Robinson comes from Shepperton and is employed as an inspector for the Royal Insurance Group. This is his third season on the line having previously served with the Spartan and Isthmian leagues. Mr. Robinson is an active Round Tabler to which organisation he devotes much of his spare time.

Mr. Birbeck comes from County Durham and commenced his refereeing career in 1950 whilst in the services. He continued his career with Durham and graduated through the Northern Intermediate League to the Central League and, four years ago, to the Football League list. He is also secretary of the local Junior Cup Committee and is very interested in gardening.

LIST OF BALL DONORS

17. 8.68	SHREWSBURY TOWN	L. Goodall
27. 8.68	WALSALL	B. Baker
31. 8.68	STOCKPORT COUNTY	R. G. Phillips
7. 9.68	SWINDON TOWN	D. Clark
21. 9.68	BOURNEMOUTH	L. J. Worboys
5.10.68	LUTON TOWN	D. G. Clay
19.10.68	BARROW	
2.11.68	GILLINGHAM	
4.11.68	BARNSELY	
30.11.68	TORQUAY UNITED	

Next Matches at Vicarage Road

Saturday, September 14th, 1968

TOTTENHAM

SOUTH-EAST COUNTIES LEAGUE CUP 1st ROUND

Kick-off 3 p.m.

Tuesday, September 17th, 1968

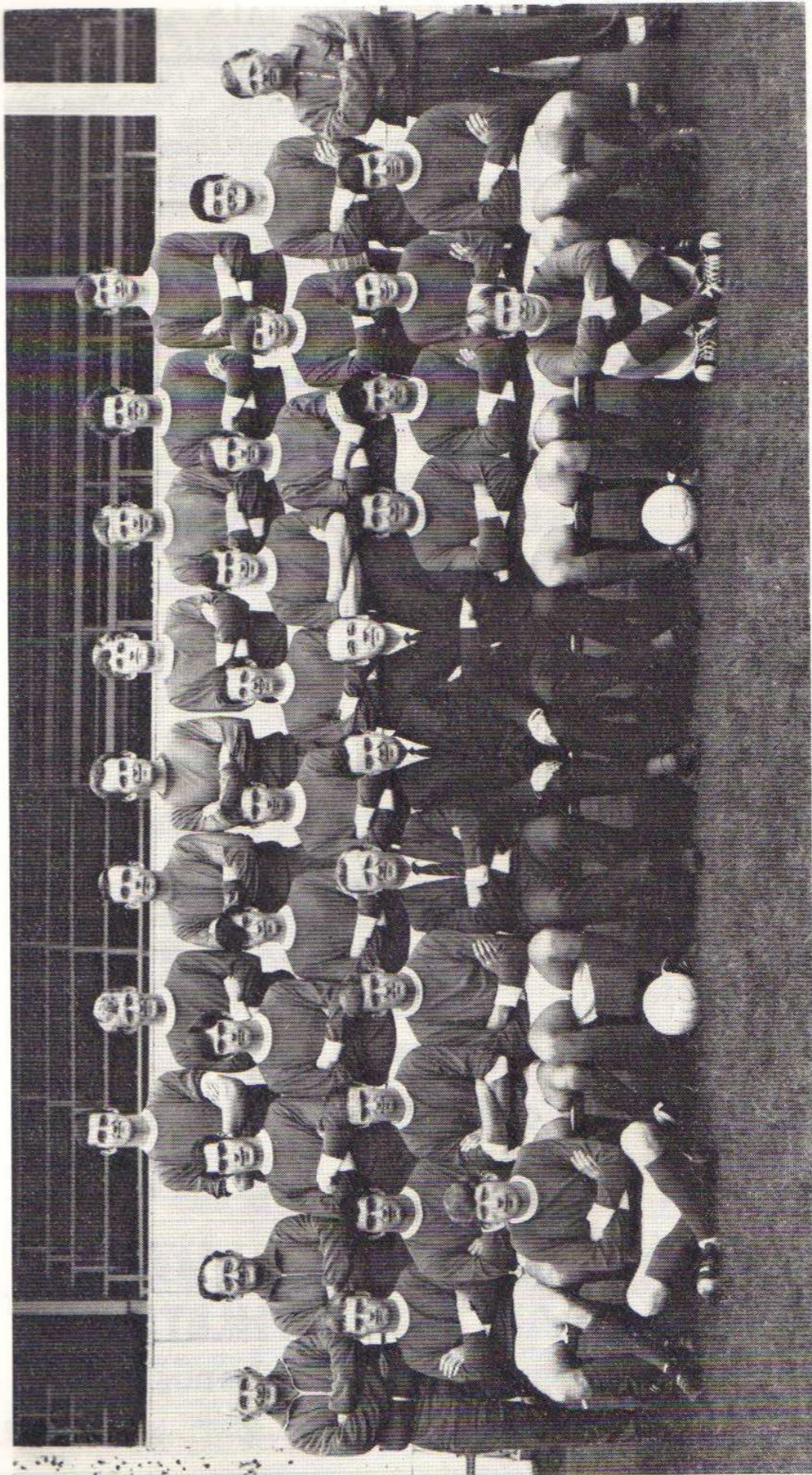
CHARLTON ATHLETIC

LONDON MID-WEEK LEAGUE

Kick-off 7.30 p.m.

SWINDON TOWN 1968-69

(By courtesy of Maylott Studios Ltd.)



Welcome to our Visitors

Swindon Town

Peter Downsborough. Goalkeeper. Born Halifax. Signed in August, 1965 from Halifax Town, where he was a product of local football. A fearless, agile player who has done much to strengthen the Town's defence. Height 5ft. 10½in. Weight 13st. 2lb.

Owen Dawson. Right back. Born Hatfield. Joined the club from Portsmouth in June, 1962. He was a regular first-team player until he was unlucky to lose his place through injury. A fast, tenacious player. He was a former youth international. Height 5ft. 9½in. Weight 11st. 12lb.

Rod Thomas. Full back. Born Glyn-corrwg. A former youth player with the club. He was signed from Gloucester City in July, 1964. Took over the full-back position last season when Owen Dawson was injured, and maintained his position throughout the season. Has gained Welsh Under-23 caps and full Welsh caps. Height 6ft. Weight 12st. 10lb.

Joe Butler. Full back. Born Newcastle. Joined Swindon from Newcastle United in August, 1965, where he graduated to the senior ranks through the club's junior team. A tenacious player whose speed and ability amply make up for his lack of inches. Height 5ft. 7½in. Weight 11st.

Frank Burrows. Centre half. Born Larkhall, Scotland. Joined the club from Scunthorpe United for whom he played three seasons. Formerly with Raith Rovers. A strong defender who has made his mark in Third Division football. Height 6ft. 1in. Weight 12st. 8lb.

Stan Harland. Left half. Born Liverpool. Was signed from Carlisle United in July, 1966. Formerly with Everton and Bradford City. He has been a regular choice at left half since making his debut at the beginning of the 1966/67 season. A forceful player who likes to go forward to back up the forwards in attack. Height 6ft. Weight 12st. 5lb.

Don Heath. Outside right. Born Stockton. Signed from Norwich in September, 1967. Formerly with Middlesbrough where he served as an apprentice professional. A hard-working winger who is also able to play in the inside forward position. Height 5ft. 8in. Weight 11st. 8lb.

Roger Smart. Right half or inside forward. Born Swindon. Another local player who joined the club direct from Swindon Schoolboys' team. At 17, he was appearing regularly at centre forward in the reserve team, but he excels as a deep-lying inside forward. A versatile player who is able to play at wing half. Height 5ft. 11½in. Weight 12st. 11lb.

John Smith. Inside forward. Born London. Signed from Torquay United in June, 1968, and previously played for Leyton Orient, West Ham United, Tottenham Hotspur and Coventry. Former England Under-23 international. Height 5ft. 8in. Weight 13st.

Peter Noble. Inside forward. Born Sutherland. Joined the club from Newcastle in January, 1968, for whom he played for four years. Prefers to play an attacking role. Height 5ft. 8in. Weight 10st. 10lb.

Don Rogers. Outside right or left. Born Paulton. Probably the most sought-after player in the team. He was signed by Swindon when only 15 and quickly came to the fore. Gained many England youth international caps and subsequently played in the England Under-23 international team. Was the club's top goal-scorer last season with 28 goals. Height 5ft. 10½in. Weight 12st. 10lb.

Willie Penman. Inside forward. Born Wemyss, Fife. Signed from Newcastle United in September, 1966, for a considerable fee. Formerly with Glasgow Rangers. A clever ball-playing inside forward who has also appeared at centre forward with the club. Height 5ft. 8in. Weight 10st. 10lb.

HODSONS

Furnishing Fabrics

KING STREET, WATFORD

PRATT (WATFORD) LTD.

Builders' Merchants and Contracting Specialists for

ASBESTOS CLADDING : ROOFING : ACOUSTIC CEILINGS

HEAD OFFICE: STAR HOUSE, CLARENDON ROAD, WATFORD

NEW SHOWROOMS: QUEENS AVENUE, WATFORD. Tel. WATFORD 26411

GARSTON 74727

JAMES COMPTON

ELECTRICAL ENGINEER AND CONTRACTOR

**149 MOUNT PLEASANT LANE
BRICKET WOOD**

WATFORD CIVIC THEATRE TRUST LTD.

PALACE THEATRE

SEPTEMBER 9th, FOR ONE WEEK ONLY

David Wood in

"THREE TO ONE ON"

by Terence Brady, John Gould and David Wood
at 7.45 p.m. Matinee Saturday 4.45 p.m.

September 17th, for one week only
THE THWARTING OF BARON BOLLIGREW
at 7 p.m. Matinee Saturday 2.30 p.m.

Telephone WATFORD 25625

WEBB'S SPARE PARTS (Watford) LIMITED

Specialists in old cars from 1932 on

Tyres, Batteries, Battery Chargers, Heaters, Etc., on Terms

Call, write or 'phone for details. General Engine and Chassis Spares

36 VICARAGE ROAD, WATFORD, HERTS



Cape Universal

**A new force in the
Building Industry**

Cape Universal Building Products Limited
Exchange Road, Watford, Herts. Tel: 34551

A member of the Cape Asbestos Group of Companies

**BEST
FOR
ALL
SPORT**

WATFORD POST

**YOUR
LOCAL
PAPER**

*Don't be late for the match—
get a watch from*

JACKSON
(from B. S. Morse)

*"Watford's oldest jewellers
now in fourth generation."*

**24 HIGH STREET
WATFORD
WATFORD 32449**

WATFORD

Yellow shirts, black shorts

1. MIKE WALKER
2. DUNCAN WELBOURNE
3. JOHN WILLIAMS
4. KEITH EDDY
5. BRIAN GARVEY
6. TOM WALLEY
7. STEWART SCULLION
8. BRIAN OWEN
9. TERRY GARBETT
10. BARRY DYSON
11. BERNARD LEWIS
12. RODNEY GREEN

Referee:

D. CORBETT (Wolverhampton)

Ball Donor:

D. CLARK, Esq.

SWINDON TOWN

Red with white trimming.

1. PETER DOWNSBOROUGH
2. OWEN DAWSON
3. ROD THOMAS
4. JOE BUTLER
5. FRANK BURROWS
6. STAN HARLAND
7. DON HEATH
8. ROGER SMART
9. JOHN SMITH
10. PETER NOBLE
11. DON ROGERS
12. WILLIE PENMAN

Linesmen:

B. K. ROBINSON (Shepperton)
(Red Flag)

L. BIRBECK (County Durham)
(Yellow Flag)

FOLLOW KEN FURPHY . . .

AND SIGN ON WITH

WATFORD OBSERVER

ALL THE NEWS FOR LESS THAN 1D. PER DAY

WATFORD POOLS AND DEVELOPMENT ASSOCIATION

£800

WEEKLY IN PRIZES

DAILY LUCKY NUMBERS — 3 HIGHEST SCORES

ADDITIONAL MONTHLY GIFTS

WHY NOT JOIN OUR BAND OF AGENTS?

Apply for Agency—Pools Office

GOLDEN GOAL COMPETITION:

1st prize £20 for ticket with correct time of 1st goal scored

Tickets available from the sellers, 1s. each.

All sportsmen score by shopping at
GADE HOUSE
14 HIGH ST. WATFORD

MENSWEAR TAILORING SPORTSWEAR

LCS

LONDON CO-OPERATIVE SOCIETY
WAT 22371

LYNWOOD JOINERY
WORKS LTD.

For JOINERY and
BUILDER'S PLANT

Office and Works:

L.M.S. Goods Yard, Croxley Green

—Stockists of all standard doors—

Tel. WATFORD 32152/41659

Interesting work in all departments
in pleasant surroundings at

WATFORD ELECTRIC
& MFG. CO. LTD.

(Whippendell Road)

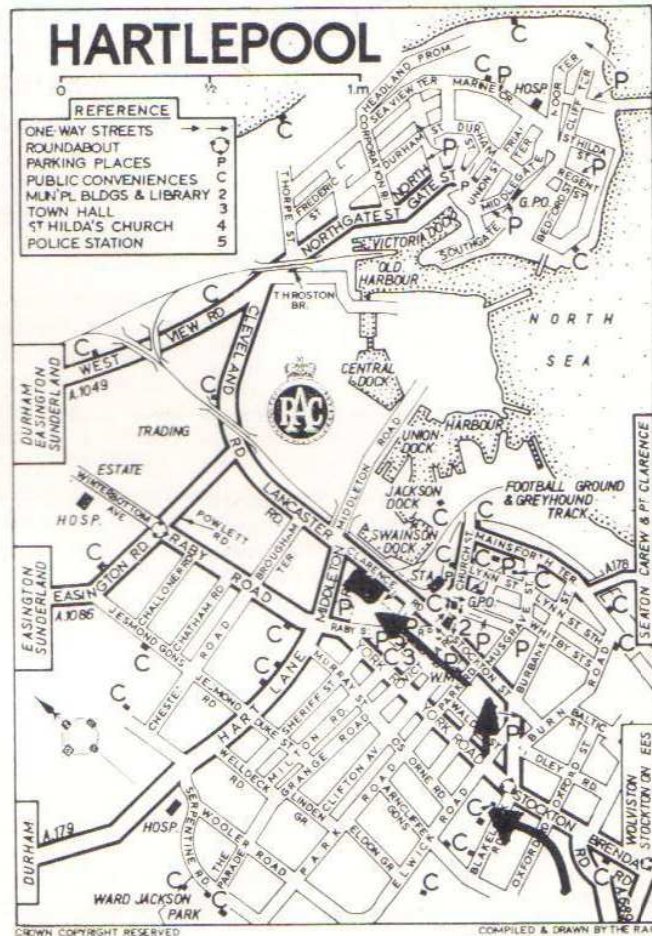
Call and see us, or telephone

WATFORD 28201

AWAY TRAVEL

From WATFORD

Join M1 as signed	
“Birmingham M1”	
Toddington Service Area	22 miles
Newport Pagnell	
Service Area	37 miles
Watford Gap	
Service Area	61 miles
Leicester Forest	
Service Area	84 miles
Trowell Service Area ...	110 miles
Woodhall Service Area	137 miles
Junction with M18	142 miles
Follow signs	
“Doncaster M18”	
At 10 miles on,	
join A1(M)	
End of A1(M). Join A1	160 miles
Wetherby, on L	187 miles
Scotch Corner	221 miles
Darlington Motorway ...	229 miles
Follow signs “Newcastle”	
Intersection A689	243 miles
Follow signs “Sedgefield	
A689”	
Sedgefield	247 miles
WEST HARTLEPOOL	261 miles
(See Plan)	



You are looking for the best “ON THE FIELD”

—so only look for the best “OFF THE FIELD”

Prompt and free delivery of **TIMBER etc.**

W. H. LAVERS & SONS LTD.

TIMBER AND BUILDING MATERIAL MERCHANTS

MERTON ROAD, WATFORD.

Telephone 25292

and at 304 St. Albans Road.

Also Hemel Hempstead and St. Albans

WATFORD FIXTURES 1968-1969

Football League Division III

© Copyright of the Football League

Aug., 1968		Opponents	Venue	Result	Goal scorers	Attendance
Sat.	10	Bristol Rovers ..	Away	D 1-1	Lewis	8,077
Sat.	17	SHREWSBURY T. ..	HOME	W 2-0	Dyson, Eddy	9,574
Tues.	27	WALSALL ..	HOME	D 0-0		9,361
Sat.	31	STOCKPORT CO. ..	HOME	L 0-1		8,481
Sept.						
Sat.	7	SWINDON TOWN ..	HOME			
Tues.	10	Northampton T. ..	Away			
Fri.	13	Reading ..	Away			
Mon.	16	Hartlepool ..	Away			
Sat.	21	BOURNEMOUTH ..	HOME			
Sat.	28	Crewe Alexandra ..	Away			
Oct.						
Sat.	5	LUTON TOWN ..	HOME			
Tues.	8	Walsall ..	Away			
Sat.	12	Oldham Athletic ..	Away			
Sat.	19	BARROW ..	HOME			
Sat.	26	Brighton ..	Away			
Nov.						
Sat.	2	GILLINGHAM ..	HOME			
Mon.	4	BARNSELY ..	HOME			
Sat.	9	Orient ..	Away			
Sat.	23	Rotherham Utd. ..	Away			
Sat.	30	TORQUAY UTD. ..	HOME			
Dec.						
Sat.	14	OLDHAM ATH. ..	HOME			
Sat.	21	Barrow ..	Away			
Thur.	26	Luton Town ..	Away			
Sat.	28	BRIGHTON ..	HOME			
Jan., 1969						
Sat.	4	SOUTHPORT ..	HOME			
Sat.	11	Gillingham ..	Away			
Sat.	18	ORIENT ..	HOME			
Sat.	25	Barnsley ..	Away			
Fri.	31	Tranmere Rovers ..	Away			
Feb.						
Sat.	8	ROTHERHAM UTD. ..	HOME			
Sat.	15	Torquay Utd. ..	Away			
Sat.	22	MANSFIELD TOWN ..	HOME			
March						
Sat.	1	BRISTOL ROVERS ..	HOME			
Mon.	3	Southport ..	Away			
Sat.	8	Shrewsbury Town ..	Away			
Tues.	11	TRANMERE ROVERS ..	HOME			
Fri.	14	NORTHAMPTON T. ..	HOME			
Mon.	17	Mansfield Town ..	Away			
Fri.	21	Stockport County ..	Away			
Sat.	29	Swindon Town ..	Away			
April						
Sat.	5	CREWE ALEXANDRA ..	HOME			
Mon.	7	HARTLEPOOL ..	HOME			
Tues.	8	Plymouth Argyle ..	Away			
Sat.	12	Bournemouth ..	Away			
Tues.	15	PLYMOUTH ARGYLE ..	HOME			
Sat.	19	READING ..	HOME			

Football League Cup

Aug., 1968
Wed. 14 (1) Luton Town Away L 0-3

20,167

F.A. Cup

Nov., 1968
Sat. 16 Round 1
Dec.
Sat. 7 Round 2
April, 1969
Sat. 26 Final

ZAMBIAN REFLECTIONS *(continued from page 3)*

capital, 90 miles south, and the more populated copper belt 110 miles to the north.

Training sessions took place after working hours between 1630hrs. and 1800hrs., by which time every night it was dark, on mainly Tuesdays and Thursdays, but sometimes on Wednesdays and Fridays as well.

We were being accommodated at an army camp six miles outside Kabire, where the Zambian Army teams were stationed, so every morning we would take them on a training/coaching session and found this squad of 25 soldiers well disciplined, organised and very keen to learn.

In the afternoons we fitted in coaching at the local schools, but mainly at one school, King George VI, where football was the more popular sport. School hours in Zambia range between 0730hrs. to 1330hrs. when the pupils are free for the rest of the day, so have most of the afternoons free to follow up their sporting interests.

Once a week, on a Tuesday morning, I took a coaching session in the maximum security wing of the local prison where, I found out later, most of the players I was teaching were doing sentences of 15 to 20 years, but I found them very attentive, disciplined and eager to learn. This team were actually top of the local amateur league, although I suppose they had the advantage of playing all their games at home.

This was the only place where I had a language problem as all over Zambia English is the number one language, but I found in the prison half the players couldn't understand me, so I had to have the help of the team captain who interpreted what I said into the tribal tongue and, other than that, relied on basic demonstrations to show them what I wanted.

As well as coaching, our party of player/coaches came together on several occasions to play exhibition games against the National Team and District XIs.

Our first match was played only four days after arrival, and, probably, owing to problems of not having acclimatised ourselves to the 5,000ft. above sea-level altitude, the strangeness of having never played together as a team before, the hot weather that Sunday afternoon and the misfortune of playing against the National Team on one of their best days, we lost 2-0.

We then played Leicester City, who were on a 10-day playing tour of the country, but lost 4-1. By then we had familiarised ourselves with each other's play and sorted out a team formation and understanding and went on to win our next three matches against district teams 4-1, 5-3 and 4-1. Having gained our confidence we then drew with the National Team 1-1 and, in our last match, beat them 3-2, but lost 5-4 on aggregate over the three games, so couldn't claim the cup that had been offered up for that purpose.

The five main football grounds in the country, which we played on are of a very high standard with very smooth grassy surfaces, surrounded by running tracks, plenty of terracing space to hold a large-capacity crowd, and excellent changing facilities. One or two of these grounds had floodlights for evening games but most matches were played on a Sunday, kick-off 1630hrs., and usually preceded by a reserve game of the corresponding clubs.

It is hard to compare standards of football between Zambia and England as the game over there is so immature and different. The Zambian player being so agile, balanced and having a natural ability in controlling the ball, loves to play as an individual, and it was hard to read what they would do next. They lacked heading and tackling skills and were very poor on basic team methods and tactics.

The National Team had a very sound defence but lacked creative ability in their attacking play, but should perform well in the Africa Cup against the other African nations of similar style of play. Against Leicester City, with the typical European approach, they lost all their three games, but gave a good account of themselves in determination and enthusiasm. It wasn't as hot in Zambia as we'd expected due to it being their winter, a reversal to our seasons, but every day was nearly the same—cool mornings, warm, fine sunny, cloudless days with the temperature reaching around the 75 degs. F.; dark by 1800hrs. and cool evenings.

Life is so different 6,000 miles away and things you take for granted in England at first become a problem, such as buying a stamp, making a telephone call, transport and postal deliveries.

Nowhere else in the world would you want to experience warmer friendship or hospitality than what we encountered during our stay in Zambia. I'll never forget the tribal farewell chant that the players of my club, "The Warriors," sang to me on my last evening in Kabire, or the unbelievable spectacle of the Zambesi River thundering over the 350ft. deep canyon which forms the Victoria Falls.

I made many friends and feel very fortunate that I was able to experience the Zambian way of life and hope that, probably, in the near future we shall be able to welcome a team from Zambia to play and gain experience in this country.

BRIAN GARVEY

JOHN F. COLMAN

BESPOKE TAILOR

Wedding orders a speciality

Has now moved to larger premises

80 High Street, Watford

First Floor—over Ryman's Stationers

(opposite Cawdell's Store)

Tel. Watford 25700

Specialist in Made-to-

Measure Clothes

High-grade Cloths—Best

and Latest Designs

And

Tailored Alterations and

Repairs

Dress-wear Hire

Valet Service

VALES PLANT REGISTER LIMITED

YOUR LOCAL PLANT HIRER

require EXPERIENCED

FITTERS AND PLANT OPERATORS

Top Rates, Good Working Conditions

Apply: **Mr. Meek, Tolpits Lane, Watford, Herts**

Telephone: Rickmansworth 76688

LAST WEEK'S MATCHES

Sat., Aug. 31.

Football League. Stockport County (home). Lost 0-1.
Slater, Welbourne, Packer, Eddy, Garvey, Walley,
Scullion, Garbett, Green, Dyson, Owen.

**South-East Counties League. Oxford United (away).
Won 3-0.**—Pickworth, Harris, Walker, Galloway,
Hand, Pearce, Murry, Brooks, White, Griffiths,
Mitchell.

Scorers: Pearce, Brooks, Mitchell.

HALF-TIME SCORE INDICATOR

White number on black background.

A	Chelsea v Everton
B	Leeds v Wolves
C	Liverpool v Q.P.R.
D	Manchester U. v West Ham
E	Sheffield Wed. v Ipswich
F	Southampton v Arsenal
G	Sunderland v Leicester
H	Spurs v Burnley
I	WBA v Nottingham Forest
J	Birmingham v Huddersfield
K	Blackburn v Millwall
L	Blackpool v Bolton

Gold number on black background.

A	Cardiff v Middlesbrough
B	Charlton v Portsmouth
C	Crystal Palace v Carlisle
D	Norwich v Sheffield U.
E	Oxford v Fulham
F	Brighton v Rotherham
G	Mansfield v Oldham
H	Northampton v Bournemouth
I	Orient v Luton
J	Walsall v Reading
K	Aldershot v Workington
L	Colchester v York

LEAGUE TABLES, 1968-1969

LEAGUE DIV. III
(Up to and including 28th August, 1968)

	P	W	D	L	F	A	W	D	L	F	A	Pts
Luton*	5	3	0	0	12	2	1	0	3	1	9	
Mansfield	5	2	1	0	6	3	1	0	1	2	7	
Swindon	4	2	1	0	4	0	1	0	0	0	6	
Reading	5	2	0	0	0	0	2	1	3	5	6	
Brighton	5	1	1	1	0	3	1	1	0	4	3	6
Rotherham†	5	2	1	0	5	1	0	1	1	4	6	6
Crewe*	5	2	0	0	7	1	0	2	1	3	7	6
Barrow	5	0	2	0	1	1	2	0	1	5	6	6
Bournemouth	5	2	0	1	6	1	0	1	1	3	4	5
Tonbridge	5	2	0	0	6	1	0	1	2	3	6	5
Orient	4	1	1	0	4	3	0	2	0	4	4	5
Plymouth†	4	1	1	0	5	3	1	0	1	1	3	5
Stockport	5	0	2	0	4	4	1	1	1	2	2	5
Tranmere	4	2	0	0	3	0	0	1	1	2	5	5
Walsall	5	0	1	1	2	3	1	2	0	3	2	5
WATFORD	4	1	1	1	2	1	0	1	0	1	1	4
Bristol R.	5	1	1	1	5	5	0	1	1	3	8	4
Northampton	3	0	1	0	1	1	1	0	1	1	1	3
Shrewsbury	5	0	1	1	1	2	1	0	2	2	5	3
Gillingham	5	0	1	1	3	5	1	0	2	1	3	3
Oldham	5	1	1	1	4	3	0	0	2	0	10	3
Barnsley*	5	0	0	2	2	4	0	2	1	2	6	2
Hartlepool*	4	0	2	0	1	1	0	0	2	0	8	2
Southport	5	0	1	1	4	5	0	0	3	1	7	1

* Promoted teams
† Relegated teams

LONDON MID-WEEK LEAGUE
(Up to and including 28th August, 1968)

	P	W	D	L	F	A	Pts
Millwall	2	2	0	0	5	2	4
WATFORD	1	1	0	0	1	0	2
Colchester Utd.	2	1	0	1	3	2	2
Aldershot	2	1	0	1	2	2	2
Southend Utd.	1	0	0	1	0	1	0
Charlton Athletic	1	0	0	1	2	3	0
Orient	1	0	0	1	0	3	0

S.E. COUNTIES LEAGUE
(Senior Section)
(Up to and including 31st August, 1968)

	P	W	D	L	F	A	Pts
Orient	3	3	0	0	13	2	6
Millwall	3	3	0	0	14	3	6
Ipswich Town	3	3	0	0	17	4	6
Charlton Athletic	4	3	0	1	11	5	6
Tottenham	3	2	0	1	10	1	4
Q.P.R.	3	2	0	1	5	3	4
Chelsea	3	2	0	1	8	6	4
West Ham	4	1	2	1	4	3	4
Crystal Palace	4	2	0	2	15	15	4
Brighton	3	1	0	2	4	7	2
Colchester	3	1	0	2	4	7	2
WATFORD	3	1	0	2	4	14	2
Fulham	3	1	0	2	1	5	2
Reading	4	0	2	2	2	18	2
Luton Town	3	0	0	3	7	14	0
Gillingham	2	0	0	2	1	5	0
Oxford Utd.	3	0	0	3	1	9	0

ROLL CALL, 1968-1969

(Up to and including 31st August, 1968)

LEAGUE DIVISION III

F.L. Appearances	F.L. Scorers
Dyson 4	Dyson 1
Eddy 4	Eddy 1
Garbett 3	Lewis 1
Garvey 4	
Green 3	
Hale 1 (1)	
Lees 1	
Lewis 3 (1)	
Owen 1 (2)	
Packer 1	
Scullion 4	
Slater 4	
Walley 4	
Welbourne 4	
Williams 3	

LONDON MID-WEEK LEAGUE

Appearances	Scorers
Brown 1	Endean 1
Cooper 1	
Endean 1	
Griffiths 1	
Hale 1	
Lakey 1	
Lees 1	
Low 1	
Owen 1	
Packer 1	
Rutherford 1	

SOUTH-EAST COUNTIES LEAGUE

Appearances	Scorers
Brooks 1	Brooks 1
Galloway 3	Mitchell 2
Griffiths 2	Pearce 1
Hand 2	
Harris 3	
Johnstone 1	
Mitchell 3	
Moore 1	
Murry 3	
Pearce 3	
Pickworth 3	
Quraishi 2	
Rutherford 1	
Sloan 1	
Walker 3	
White 1	

OUR COVER PICTURE

(Courtesy of Graphic Photos)

Another goal-scoring chance is missed in the match against Stockport County last Saturday. In this picture Bernard Lewis sees his effort go by.

RESERVE & JUNIOR FIXTURES 1968-1969

2nd Team—THE LONDON MID-WEEK LEAGUE

			F	A	
Aug. 1968					
Tues. 20	Southend	Home	1—0		669
Sept.					
Tues. 17	Charlton A.	Home	
Tues. 24	Charlton A.	Away	
Oct.					
Tues. 1	Colchester U.	Home	
Wed. 9	Orient	Away	
Tues. 15	Aldershot	Home	
Wed. 23	Colchester U.	Away	
Tues. 29	Millwall	Home	
Nov.					
Wed. 6	Southend U.	Away	
Tues. 12	Orient	Home	
Wed. 27	Millwall	Away	
Dec.					
Tues. 10	(LC) Charlton	Home	
Wed. 18	Aldershot	Away	
Tues. 31	(LC) Southend	Home	
Jan. 1969					
Wed. 8	(LC) Aldershot	Away	
Tues. 14	(LC) Orient	Home	
Tues. 21	(LC) Charlton	Away	
Tues. 28	(LC) Millwall	Home	
Feb.					
Tues. 11	(LC) Colchester	Home	
Wed. 19	(LC) Southend	Away	
Wed. 26	(LC) Millwall	Away	
Mar.					
Wed. 5	(LC) Orient	Away	
Tues. 25	(LC) Aldershot	Home	
April					
Wed. 2	(LC) Colchester	Away	

DIVISION 3 RESULTS OF MATCHES LAST SEASON

			F	A	
Versus Swindon Town	Home	2	0	7,569	
Versus Swindon Town	Away	0	2	13,147	
Record League Gate					
27,461, v. Luton, 1936/7.					
Record Cup Gate					
33,553 v. Liverpool, 1966/7.					

SOUTH-EAST COUNTIES LEAGUE Senior Division

			F	A	
1968					
Aug. 10	Ipswich T.	Home	1—7		
24	Tottenham	Away	0—7		
31	Oxford Utd.	Away	3—0		
Sept. 7	West Ham	Away	
14	(LC) 1 Tottenham	Home	
21	Reading	Away	
28	Charlton	Home	
Oct. 5	Brighton	Away	
12	(LC) 2	
19	Q.P.R.	Away	
26	Luton T.	Home	
Nov. 2	Millwall	Away	
9	Orient	Home	
16	Crystal Palace	Away	
23	Chelsea	Home	
30	—	
Dec. 7	Chelsea	Away	
14	Fulham	Away	
21	Gillingham	Home	
28	Orient	Away	
1969					
Jan. 4	—	
11	Oxford Utd.	Home	
18	Luton T.	Away	
25	Q.P.R.	Home	
Feb. 1	Brighton	Home	
8	Ipswich T.	Away	
15	Tottenham	Home	
22	—	
Mar. 1	Charlton	Away	
8	Fulham	Home	
15	Gillingham	Away	
22	Millwall	Home	
29	Colchester	Home	
April 5	—	
12	Crystal Palace	Home	
19	—	
26	—	
Undated	Colchester	Away	
	Reading	Home	
	West Ham	Home	

Thomas McInerney & Sons Ltd.

*Building and
Civil Engineering Contractors*

12 HIGH STREET, WATFORD

Telephone Watford 22277 (6 lines)

F. W. WITHEY
LIMITED

1a Strangeways, Watford

BUILDERS AND DECORATORS
Yard and Works—Copsewood Road
Watford

●
ALTERATIONS A SPECIALITY
●

Estimates Free

Tel. 25781

Make a point of popping into
a shop which always offers
you personal service . . .

DAVIES

91-93 Vicarage Road, Watford

Telephone WATFORD 31271

Newsagent to the Club

Newsagents — Tobacconists
Confectioners — Stationers

BOSCH

for electrical accessories in all cars

Fog and Driving Lamps • Ignition • Coils • Alternators • Horns
Dynamos • Batteries and other electrical accessories • Diesel
Fuel and Petrol Injection Equipment • Test Equipment • Aerials
Blue Spot Radios • Eiseman Lamps and Generators

BOSCH LIMITED • RHODES WAY • RADLETT ROAD • WATFORD • HERTS • WATFORD 44233

Arthur Grimsdell

TOBACCONIST
STATIONER
CONFECTIONER
NEWSAGENT
TOYS

Tel. Watford 21636

54 Vicarage Road, Watford

TELEPHONE WATFORD 22648

E. N. MOLE & CO. LTD.

Plumbers and Heating Engineers

Decorators and Paperhangers

3 TOLPITS LANE, WATFORD

Repairs of all kinds—Estimates free

DON'T GO TO WORK ON AN EGG, BUY A BIKE FROM

THIRTEENS CYCLE DEPOT LTD.

73 CHALK HILL, OXHEY, WATFORD Tel. Watford 34221

AND GO ON THAT

Large selection to choose from: HOLDSWORTH, CLAUD BUTLER, DAWES, ELSWICK, RALEIGH,
TRIUMPH, BSA, CARLTON, SUN, VIKING, MOULTON, PAYEMASTER JUNIORS, HERCULES and
THE NEW TREND SMALL WHEEL RANGE.

FREE AFTER SALES SERVICE — ALL ACCESSORIES — LIGHTWEIGHT FRAMES
SPRINT WHEELS BUILT TO ORDER — WIDE RANGE OF TUBULARS.

Clothing to order — Socks and shoes in stock — Waterproof clothing

OFFICIAL C.T.C. REPAIRERS

DOUBLE DIAMOND WORKS WONDERS!

Brewed by IND COOPE



Silk Screen Printers
Poster Showcard
Writers

STUDIO ONE
REMBRANDT HOUSE
WHIPPENDELL ROAD
WATFORD

Tel. Watford 28402/31153

THE HANDYMAN'S SHOP

P. BECKFORD LTD.

307 BALDWINS LANE
CROXLEY GREEN

Telephone: Rickmansworth 75697

- Timber, Hardboard and Mouldings
- Ironmongery and Tools
- Domestic Hardware
- Garden Requisites
- Key Cutting
- Electrical Accessories
- Glass cut to size

Stockists of high-class Decorating Materials.

Agents for Crown, Sanderson, Continental and Shand Kydd Wallpapers.

BOSCH

**New plugs with the hot
CR-Electrode — Instant
get away! Top
performance**

CR-Electrode



BOSCH LIMITED • RHODES WAY • RADLETT ROAD • WATFORD • HERTS • WATFORD 44233